

Harness the *power*

Australian
designed, made
and owned!

of Braemar

By SEELEY INTERNATIONAL 

for instant warmth and cosy comfort, *naturally.*

100%

highest efficiency

star ratings in Australia¹

100%

renewable hydrogen-ready²



World-leading climate control solutions



Gas Heating

Braemar
By SEELEY INTERNATIONAL 

Harness the *power* of nature.

At Seeley, we harness the power of earth and air.

There's a natural attraction between earth and air that is very powerful...

Outside, these forces of nature live all around us. But, what if we could harness this power inside too?

Our gas heating technology has been inspired by nature with ingenious design, incredible reliability and unsurpassed heating performance to create clean, natural, energy efficient heating when and where you want it.

Today, you can harness that power too.

Seeley International is renowned for world-class design and innovation, striking that delicate balance between form and function, just like nature. We have a range of ducted gas heaters that seamlessly integrate with your home without compromising on comfort, quality or efficiency credentials, through to our traditional space heaters that also deliver efficient, cosy heating for long lasting comfort.

Since day one, over 50 years ago, our company has been about challenging mindsets and stretching the imagination. Trust, reliability and innovation have been the cornerstones to success. It's no coincidence that Seeley International is the most awarded air conditioning manufacturer in Australia. We export our amazing products all around the globe.

At Seeley International, we don't settle for ordinary, and neither should you.

Frank Seeley

AM, DUniv Flin, FAICD
Founder and Executive Chairman



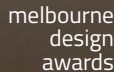
Harness the *ultimate*
in warmth and cosy comfort.

Nobody can like Braemar can!

Award Winning Company

Seeley International consistently wins awards each year for new product design, innovation and environmental friendliness.

Recent awards include:



Front cover: 1. 3 to 6 star, and 7 star equivalent products for ducted gas heating.

2. Seeley International gas appliances at point of manufacture date, as tested in a NATA Meridian test laboratory, will comply with industry safety standards as outlined by the AGA, for use of current industry approved hydrogen/natural gas blends at that time.

Braemar
BY SEELEY INTERNATIONAL

Australian *designed*,
made and owned!

Australian
designed, made
and owned!



Built by Australians, for the Australian climate.

Seeley International is proudly a 100% Australian owned company, designing and manufacturing world-leading air conditioning products for Australia and the world. As Australia's largest air conditioning manufacturer, we are a global leader in developing ingenious, energy-efficient cooling and heating products. Being made in Australia, you can rely on build quality, availability of parts and after sales service. We're extremely passionate, and dedicated to strengthening the Australian economy, supporting local employment and building on the skills of our workforce.

Ducted gas heating

Star ratings explained



Energy efficiency made easy

In Australia, there is an Energy Rating Labelling scheme to help customers choose energy efficient appliances



More stars, more savings

The higher the number of stars on the rating label, the more efficient the appliance, meaning greater annual savings on your running costs



One star = 10% saving³

On average an increase of one star means an average usage saving of approximately 10%



Highest star rating

Braemar has developed heaters that measure at a higher efficiency than the maximum 6 star rating stated by the Australian Standard



7 Star equivalent⁴ explained

Using the Australian Standard system, the Australian Gas Association (AGA) report calculates that Braemar has a 7 star equivalent ducted gas heater



Independently tested

All Braemar ducted gas heaters have been independently tested in an AGA NATA accredited testing laboratory



4. Star rating equivalent. Based on Australian Gas Association's results calculated in accordance with the testing methodology in AS/NZS5263.1.6:2020.

3. Data is based on: Gas price = 2.19 c/MJ • House Size – 240 m² x 2.4m ceiling height • Operation hours per year • 600 hrs (100 days at 6 hrs per day) – based on AS/NZS5263.1.6:2020 House Heat load – 0.2 MJ/h/m³ – based on AS/NZS5263.1.6:2020 • Annual Energy Consumption (AEC) for different star rated heaters based on AS/NZS5263.1.6:2020 • 3.0, 4.0, 5.0, 6.0, 6.8 and 7 star equivalent rated ducted gas heating systems. Note: These figures may vary for individual situations due to variation in factors such as gas price, house size and insulation, heater usage patterns, the area heated, how long you run the heating for, your thermostat settings, your local climate etc.

Renewable, clean, green hydrogen ...

The future of home heating.

Australians love natural gas. Almost half of all household energy in Australia is provided by gas⁵. It's a reliable, cost-effective energy for the appliances we use for cooking, heating and hot water. The great news is there are changes afoot with plans to rollout green hydrogen into the supply chain to households.

When used as a fuel, hydrogen's only by-product is water. This flexible, safe and storable fuel can be used to blend with or replace natural gas to heat homes and for cooking. It produces no carbon emissions when used as a fuel.

Hydrogen is also hugely versatile and has many other uses in industry and transport, all of which will bring us closer to a net zero emissions future, right here in Australia.

What's exciting is that hydrogen blended with natural gas is the first step to this zero emissions future in Australia and it is currently being trialed in selected communities across Australia by leading gas suppliers. Importantly it will be rolled out into various gas networks within the next 5 to 10 years.

At Seeley International, we have been working with leading industry authorities to ensure our gas heating products are "hydrogen-ready", to perform at their best using hydrogen blends to provide the same cosy warmth and whole of home comfort that millions of Australians expect and have been experiencing every winter with Braemar, for generations.

So, when clean and green, renewable hydrogen gas blends are available in your neighbourhood in the near future, you can be assured that your Braemar gas heating system will perform at its best and is compliant with all Australian Safety Standards and regulations².

5. Source: <https://renewable-gas.com.au/> 2022

2. Seeley International gas appliances at point of manufacture date, will comply with all relevant Australian Regulatory Standards, for use of current industry approved hydrogen/natural gas blends at that time.



Ducted gas heating vs reverse cycle heating

For your heating solutions, ducted gas heating provides many advantages over reverse cycle.

These include:

- Ducted gas heating offers an instant, cosy heat with less drying of the air. Reverse cycle air conditioning tends to produce dry air that can irritate the eyes, nose and skin.
- Running cost savings.
- Warms your whole home quickly by producing much warmer air temperatures from your outlets than reverse cycle.
- Most ducted gas heaters are quieter as they are mounted in the roof space, out of sight and without troublesome noise for you or your neighbours.
- Ducted gas heating operates independently of how cold it gets outside and therefore provides constant, cosy performance at all times.
- Whole of home heating with flexible zoning options.



Cost effective

Savings of **\$368 per year** when compared to reverse cycle³



Better performance

Reverse cycle works less efficiently when outside temperature drops. Ducted gas efficiency remains steady.



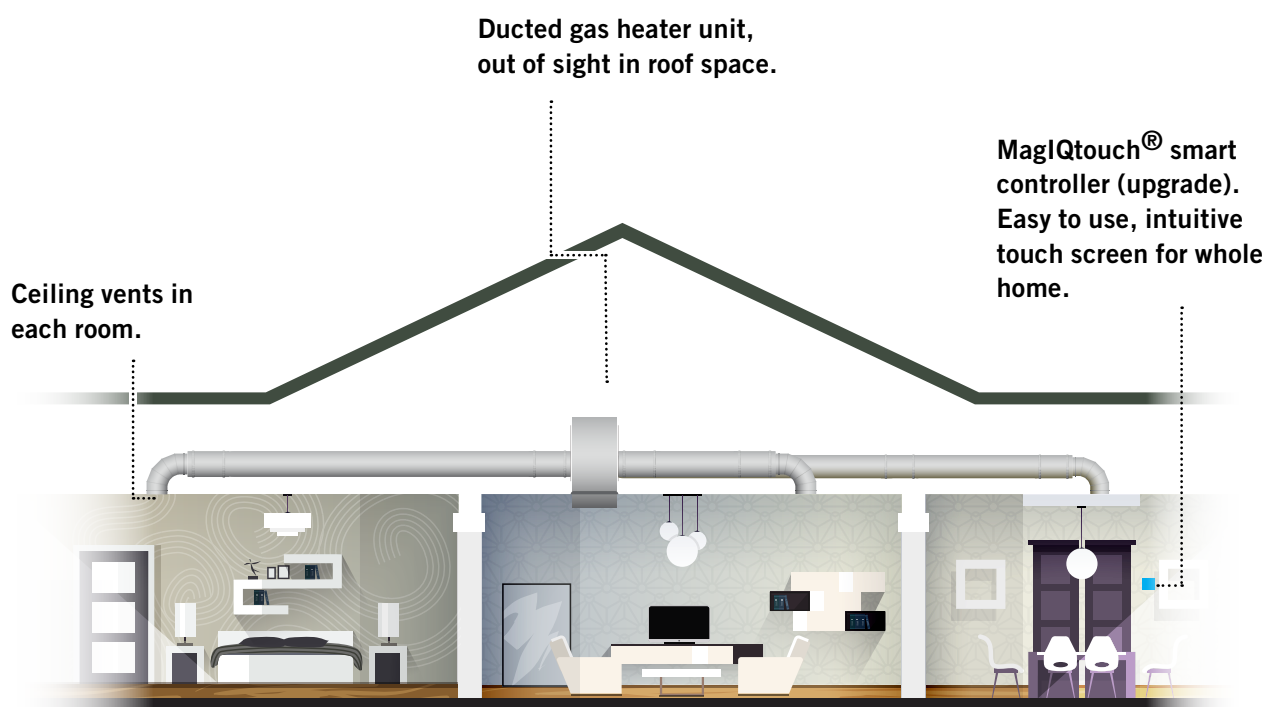
Instant warmth

Ducted gas reaches desired temperature much faster than reverse cycle.



Comfortable air

Ducted gas heating won't dry your skin and eyes. It's a different kind of cosy warmth.



Upgrade your selected star rating and see your savings grow every year

Compared to a 3 star ducted gas heater³

New home build or installing a new heating system

Braemar has the highest efficiency star ratings in Australia for ducted gas heating¹



\$

Savings over 5 years, compared to a 3 star heater³

Achieve even higher savings by adding zone control to your heating system.

4 star	5 star	6 star	7 star ⁴
\$1,355	\$2,415	\$3,255	\$3,950

1. 3 to 6 star, and 7 star equivalent products for ducted gas heating.

4. Star rating equivalent. Based on Australian Gas Association's results calculated in accordance with the testing methodology in AS/NZS5263.1.6:2020.

3. Data is based on: Gas price = 2.19 c/MJ • House Size – 240 m² x 2.4m ceiling height • Operation hours per year • 600 hrs (100 days at 6 hrs per day) – based on AS/NZS5263.1.6:2020 House Heat load – 0.2 MJ/h/m³ – based on AS/NZS5263.1.6:2020 • Annual Energy Consumption (AEC) for different star rated heaters based on AS/NZS5263.1.6:2020 • 3.0, 4.0, 5.0, 6.0, 6.8 and 7 star equivalent rated ducted gas heating systems. Note: These figures may vary for individual situations due to variation in factors such as gas price, house size and insulation, heater usage patterns, the area heated, how long you run the heating for, your thermostat settings, your local climate etc.

Replacing your old heating system?

Why you should choose ducted gas heating

Throughout the cooler months, it is **vital for the health of you and your loved ones to have a consistent warm, comfortable environment.** Ducted gas heating offers a reliable, comfortable, instant and constant heat.

If you are undertaking a renovation, or have an older inefficient system, there are many compelling reasons to stay with, or change to, ducted gas heating. Ducted gas heating has advanced considerably in the last 20 years, providing significant efficiency savings and performance improvements. Replacing an old system with a new Braemar ducted gas heating solution can deliver you significant savings on your energy bills.

Replace your old heater and **SAVE!**

Savings per year compared to an older 1.5 star ducted gas heater³

Upgrade to:



Note: Zoning an upgraded heater can bring further energy cost savings. Ask your Braemar Dealer for further details.

Zone your home with three zoning options⁶

Zoning your home's new ducted gas heating system can deliver **up to 60% more savings⁷** on top of your star rating choice when you select the gas heater unit. Heating only selected rooms or zones in your home when you want to, means you aren't paying for heating certain areas of your home unnecessarily.

Standard zoning

Controlled from:

1 x MagIQtouch[®] controller

in common zone

- Set **one temperature** for all zones
- Ability to turn zones on and off, based on minimum outlet requirement



1 x Main MagIQtouch[®] controller



Central control zoning

Controlled from:

1 x MagIQtouch[®] controller

in common zone

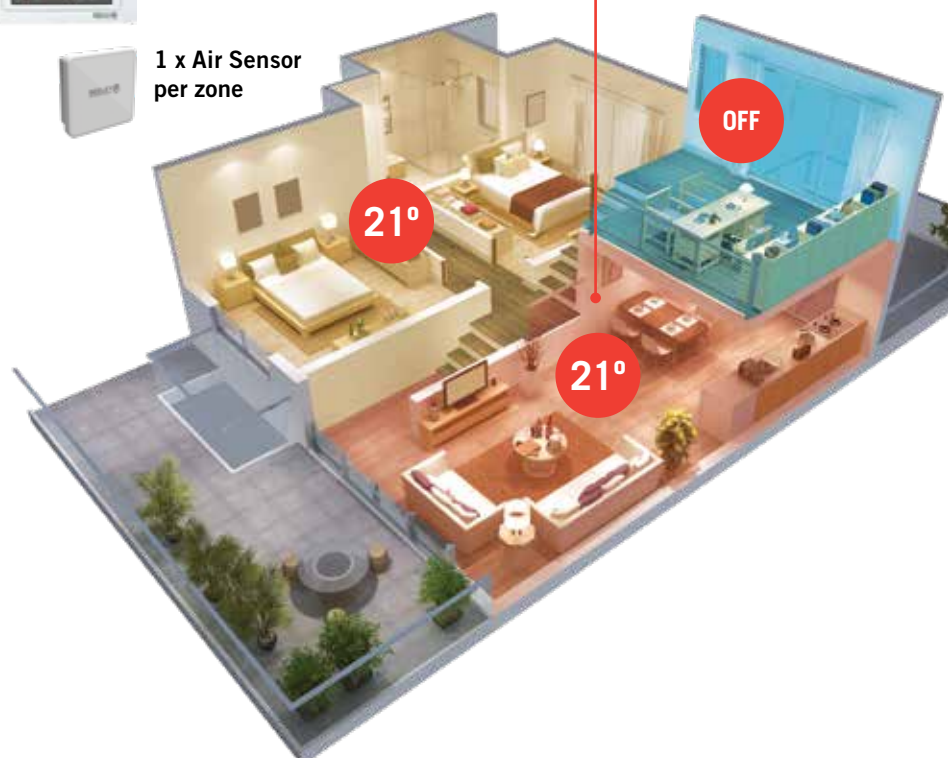
- Set **different temperatures** for each zone
- Additional discreet MagIQtouch[®] Air Sensors located in each zone
- Ability to turn zones on and off, based on minimum outlet requirement
- Option for up to 10 different zones



1 x Main MagIQtouch[®] controller



1 x Air Sensor per zone





Save up to an extra 60% on running costs with zone control⁷

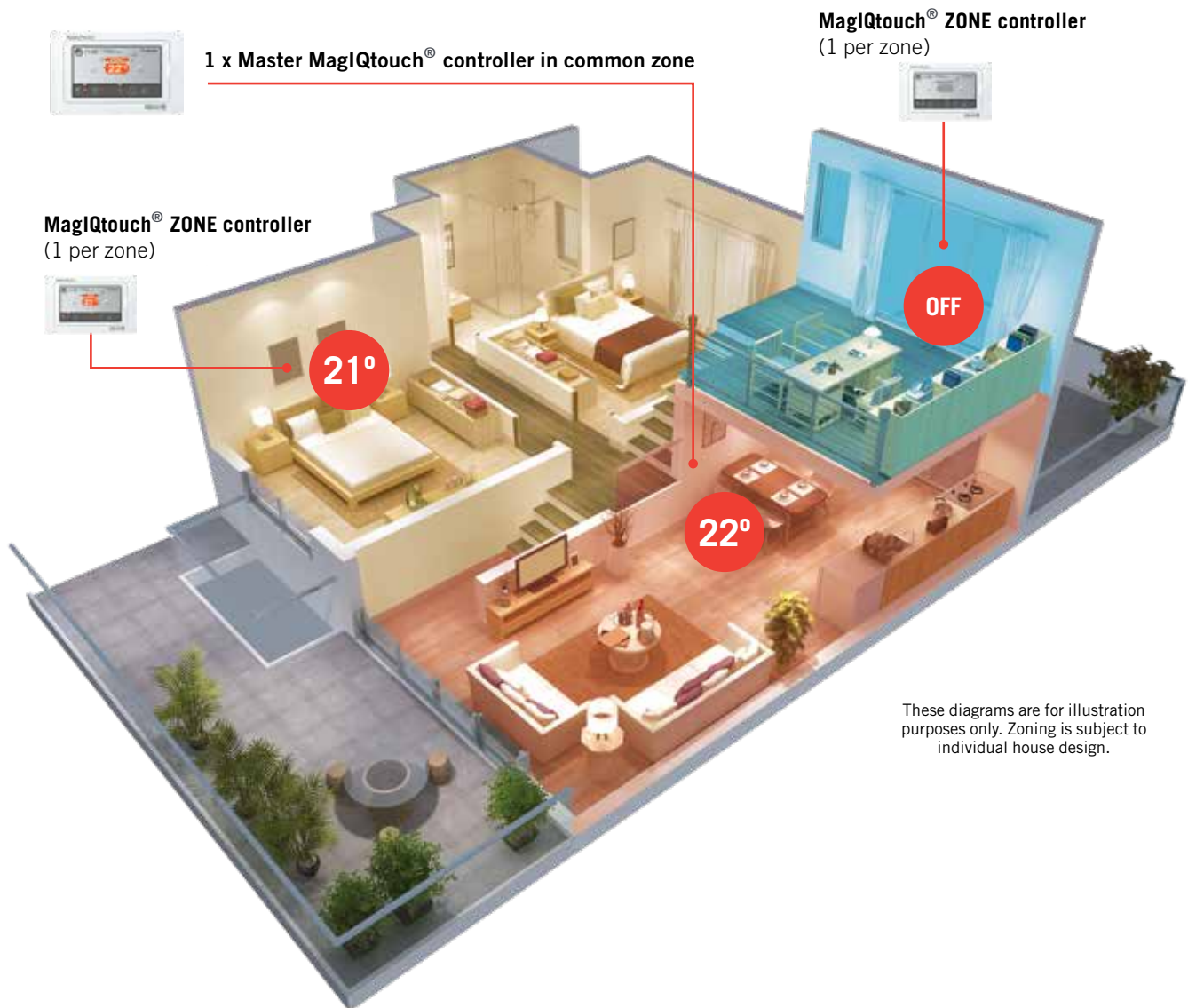
Complete comfort zoning

Controlled from:

Up to 10 x MagIQtouch® controllers

(1 x per zone)

- Set **different temperatures** for each zone from a dedicated MagIQtouch® controller in each zone based on minimum outlet requirement
- MagIQtouch® zone controllers include built-in temperature sensors
- Ability to switch on/off whole system from a central master MagIQtouch® controller
- Set independent programs for zones from each MagIQtouch® zone controller
- Option for up to 10 different zones



These diagrams are for illustration purposes only. Zoning is subject to individual house design.

6. Zoning is an optional extra cost. TQ3 and TQD3 models: zoning is not available.

7. Actual savings achieved will depend on the number of zones and controls installed, actual zone usage pattern, temperature settings, outside temperature, house size and room layout, house insulation, number of outlets, zone system design. Zoning savings are based on: • A range of assumed zone configurations, usage profiles and zone set-temperatures, with energy consumption reduced due to not heating the whole house all of the time. • Individual zone temperature control (a single MagIQtouch® controller in combination with air temperature sensors, or multiple MagIQtouch® controllers).

Harness the *simplicity* of MAGIQTOUCH® controller

Touch screen technology

Smart, sophisticated and incredibly intuitive, your MagIQtouch® controller is an upgrade from the Braemar manual controller and makes operating your Braemar ducted gas heating system so simple. Control the temperature, fan speed and many more features on a user-friendly touch screen.



Main features



Touchscreen functionality

All functions & operations are only a touch away with the easily navigated interface.



Zone your home

Switch between zones in your home and control the heating settings in each zone.

Save on running costs by switching zones off.⁹



Stylish design

Sleek screen styling to fit in to any home décor.



Program mode

Programmable 7 day, 4 time period program, customisable to suit your lifestyle (including a temporary over-ride function).



Useful settings

Access features such as child lock, quiet mode⁸ and servicing information.



Switch to cooling

Quickly switch to cooling

Add-On Cooling is available to complement your ducted gas heating system.

Please refer to the Braemar "Add-On Cooling" Brochure for more information.

Manual controller

The Braemar manual controller is simple and easy to use, controlling heating only, with a large, easy to read digital display. Zoning and timer functionality not available with this controller.



Harness the *power* of Wi-Fi and wireless

Controller upgrade options

If you choose a MagIQtouch® controller you receive a touchscreen that is hard-wired into your home, fixed to your wall, where it best suits your needs. This model of MagIQtouch® controller can be upgraded to a Wi-Fi enabled touchscreen.

Option 1



Wi-Fi enabled touchscreen:

- Take complete control of your comfort at home, at all times.
- Upgrade to a Wi-Fi module (sold separately) to work with your hard-wired MagIQtouch® Controller¹³ enabling you to control your heating directly from your personal device through our smart app.
- The Smart app¹⁰ is available on Android and IOS devices.
- Integrate into voice activated smart home controls like Google Home¹¹ and Amazon Alexa¹².

works with the
Google Assistant



Google Home



JUST ASK
amazon alexa



amazon echo



Available for download now on iOS and Android

Option 2

Unable to have a hard-wired controller? No problem. MagIQtouch® also has a wireless touch screen option.



Wireless touchscreen:

- Battery operated Wireless Controller using Radio Frequency technology.
- Ideal for renovations, or where access for cabling is limited.
- Easier to install, the RF option can operate with up to 2 primary controllers.
- Can control the entire system from 2 locations, rather than 1; an ideal solution for larger, or two storey homes.

8. TQ3 and TQD3 models: night quiet mode and zoning is not available, and fan speed is not user-adjustable.

9. Zoning is an optional extra. Heating in each zone is subject to having air sensors or additional MagIQtouch controllers.

10. Requires MagIQtouch® wall control, MagIQtouch® Wi-Fi smart kit and MagIQtouch® account to operate. Additional costs may apply.

11. Requires Wi-Fi, Amazon Account and a compatible device. Additional costs may apply.

12. Requires Wi-Fi, Google Account and a compatible device. Google and Google Home are trademarks of Google LLC. Additional costs may apply.

13. MagIQtouch Wi-Fi Module is not compatible with MagIQtouch® Wireless Controller. Existing installations including a MagIQtouch controller may need to be upgraded if purchasing the Wi-Fi module. Additional costs may apply.

Braemar ducted gas heating

Features and benefits



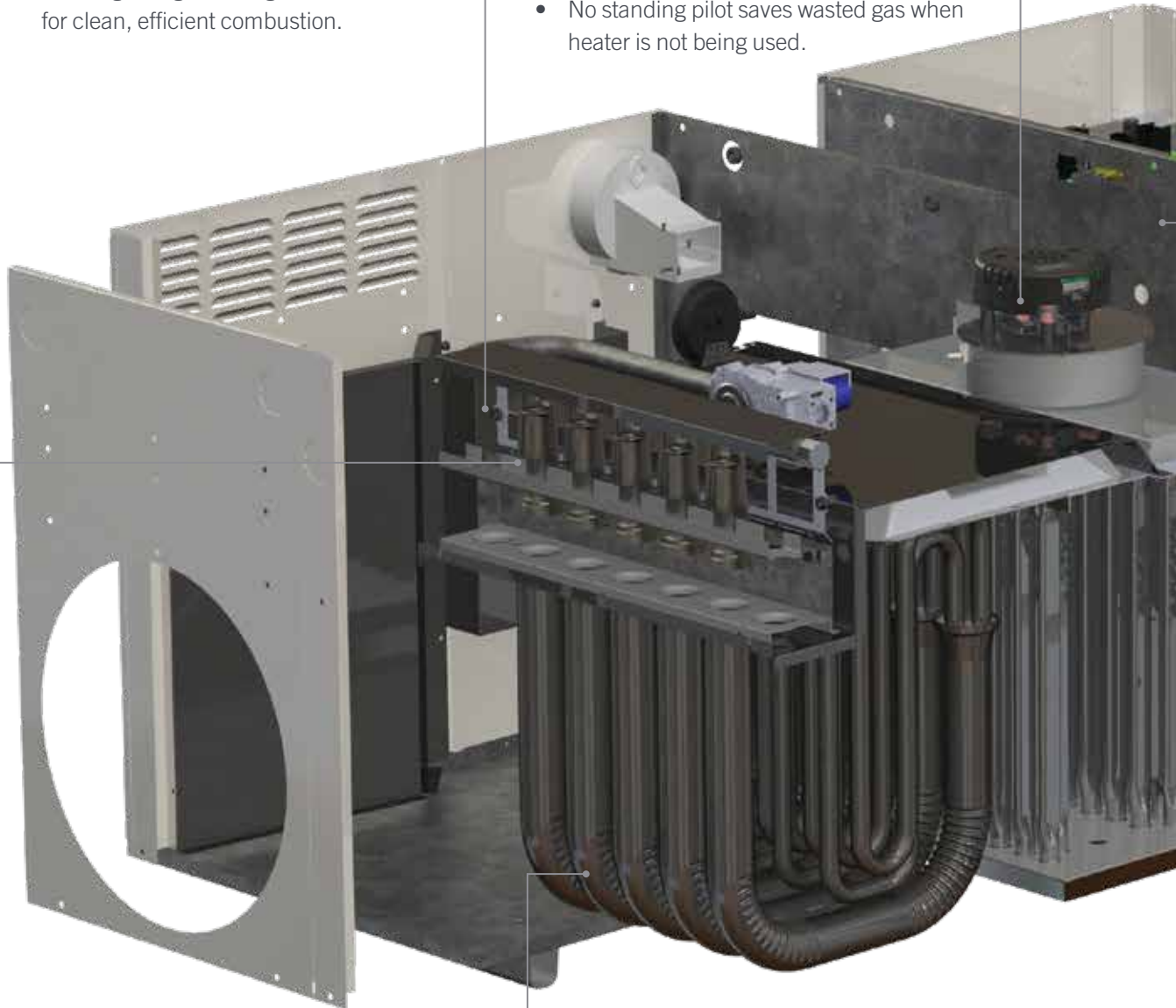
Maximum efficiency with our InShot Burner™

- Thorough air/gas mixing for clean, efficient combustion.



No pilot light ensures the heater works everytime

- Electronic ignition guarantees reliable ignition
- No standing pilot saves wasted gas when heater is not being used.



Flexible installation for all types of homes

- Unit can be safely installed inside the roof, under the floor or outside the house¹⁴
- Ducts can be installed in the ceiling or under the floor
- Two-piece configuration means easy installation.



Maximum energy efficiency with Ecostar® Tri-Action™ heat exchanger

- Standard on TQM6, TQS6 and TQS7 series ducted gas heaters
- Corrosion resistant
- Maximum heat transfer in minimum space.



Whisper quiet operation with variable speed combustion fan

- Combustion fan effectively expels all combustion gases outside.



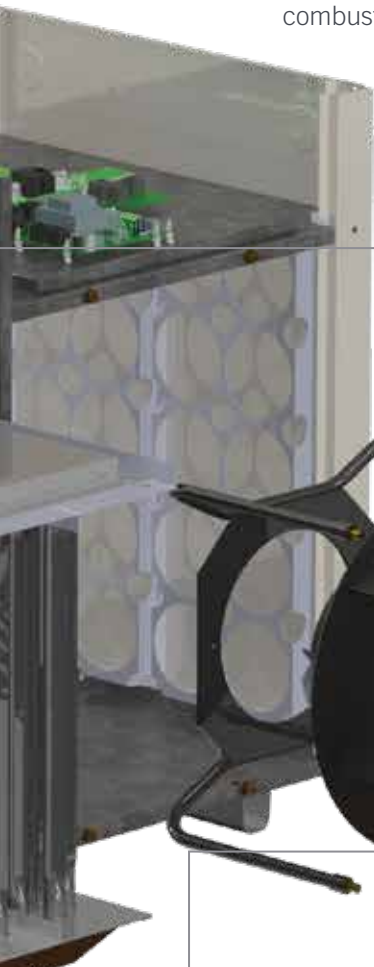
Use less energy with heater output modulation

- Our Modulating Gas Control in conjunction with its micro-processor controlled burner, efficiently burns the right amount of gas for any given situation. It can burn from 100% gas rate all the way down to 6% gas rate on our 7 star equivalent⁴ heater range when zoned.¹⁵



Australian Gas Association (AGA) tested and certified

- Multi level safety controls standard on all of our ducted gas heaters
- Integrated control system monitors all heater, flame sensor and safety functions.



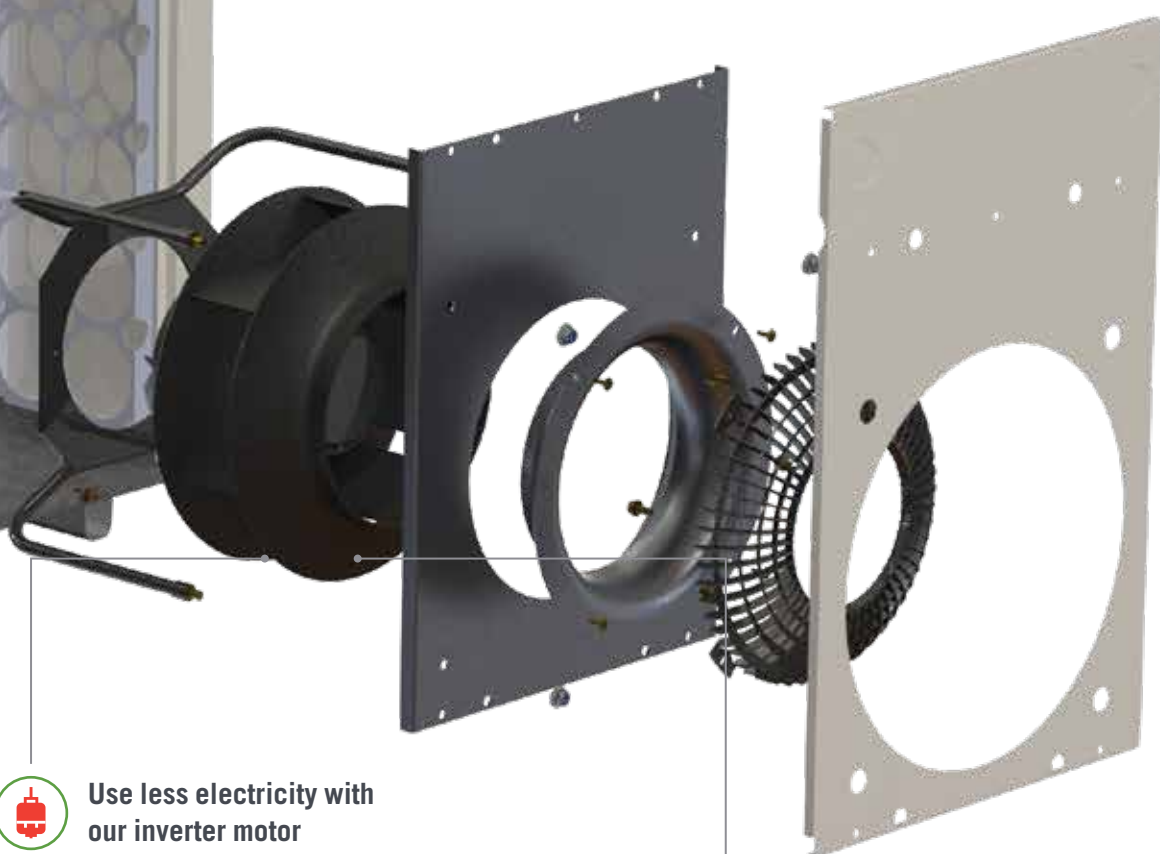
Use less electricity with our inverter motor

- Australia's **first and only** inverter motor for ducted gas heating, available on the 7 star equivalent⁴ range only
- Designed to distribute warm air via ducts quickly, effectively and discreetly
- Save on running costs.



No cold drafts with Stealth® Softair® fan system

- Exclusive to Braemar
- Delivers continuous warm air.



4. Star rating equivalent. Based on Australian Gas Association's results calculated in accordance with the testing methodology in AS/NZS5263.1.6:2020.

14. Braemar TQS7 range are only suitable for internal installations. ReBuff TQMD5 and TQD3 ranges are only suitable for external installations. Any external installations are not to be located on the roof.

15. Available on Braemar TQ4/5, SSQ4/5, TQM5/6 and TQS3/4/5/6/7 series ducted gas heaters, but is not available on other models. Subject to correct heater sizing and duct/zone configuration.

7 star equivalent⁴ range

The world's most energy efficient conventional ducted gas heaters

Boasting Australia's first and only inverter motor for ducted gas heating, Braemar's 7 star equivalent ducted gas heaters have the lowest running costs – by far!



Cost effective

Most energy efficient on the market making it cheaper to run compared to reverse cycle



Inverter motor

Australia's first and only inverter motor for ducted gas heating



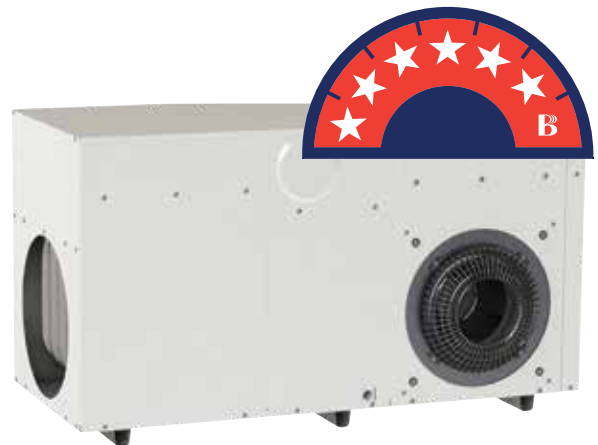
World first

Braemar delivers the world's first 7 star equivalent ducted gas heaters

Ecostar[®]

7.0 star equivalent^{4,16}

- Engineered for ultimate efficiency
- Suitable for internal installations
- Zoned-heating capability
- Not available with Add-On Cooling



4. Star rating equivalent. Based on Australian Gas Association's results calculated in accordance with the testing methodology in AS/NZS5263.1.6:2020

16. Can be Wi-Fi enabled for use with our smart app and smart home integration. Requires MagIQtouch[®] wall control, MagIQtouch[®] Wi-Fi smart kit and MagIQtouch[®] account to operate. Additional costs may apply.

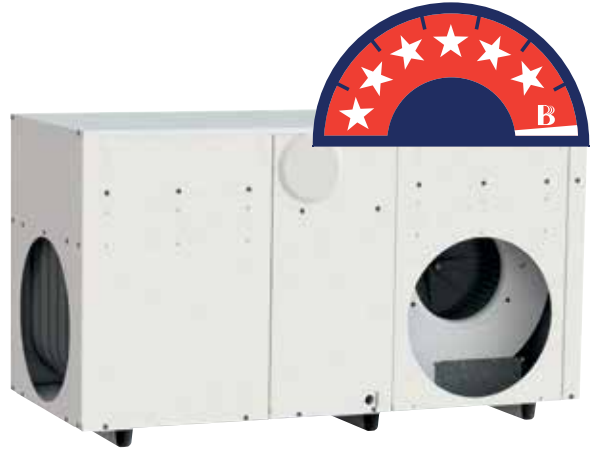
6 star range

Supernova®

6.8 star equivalent^{4,16}

Highest star rating equivalent in the 6 star category

- Low running costs, save money on energy usage
- Zoned-heating capability
- Braemar Add-On Cooling system available for model numbers TQS6X23 and TQS6X32



Ecostar®

6.3 star equivalent^{4,16}

- Zoned-heating capability
- Braemar Add-On Cooling system available for model numbers TQM6X23, TQM6X23U, TQM6X32 and TQM6X32U



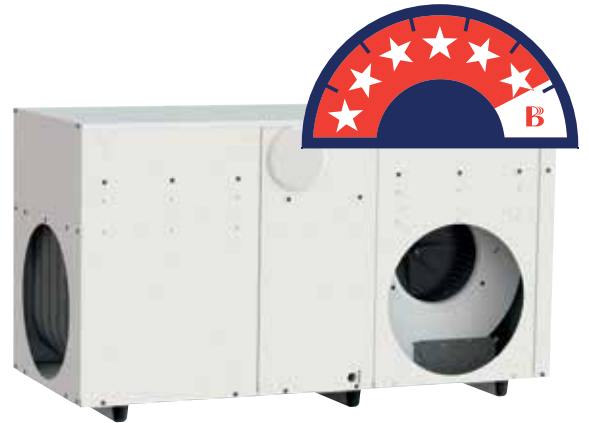
5 star range

Supernova®

5.9 star

Highest star rating in the 5 star category

- Outstanding efficiency
- Zoned-heating capability



Ecostar® Non-Condensing

5.2 star

- Small cabinet for easier installation
- No drain required
- Zoned-heating capability
- 5-star efficiency gives excellent long-term energy savings
- Braemar Add-On Cooling system available for model numbers TQM5X20, TQM5X20U, TQM5X30 and TQM5X30U



Short on space?

Braemar's non-condensing heater is small and compact for those tight spaces.

Ecostar® Side Service

5.2 star

- Zoned-heating capability
- Side access – ideal for tight installation spaces
- Braemar Add-On Cooling system available for model numbers SSQ5X20 and SSQ5X30



Side service

Offering easy access for servicing, ideal for small space installations

ReBuff™

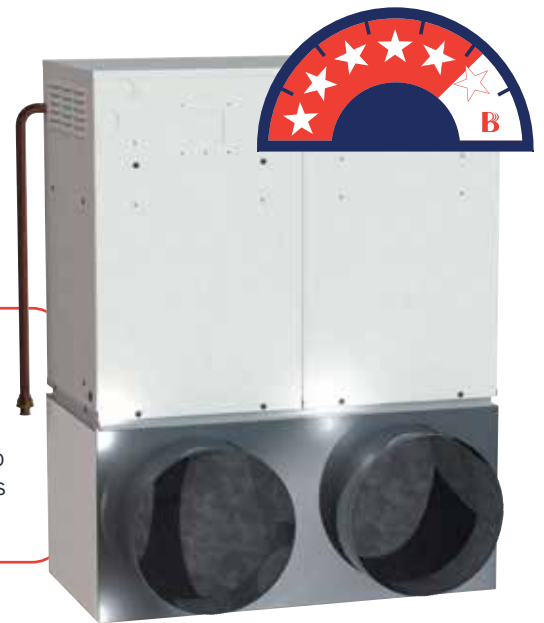
5.2 star

- Pre-fitted with brackets to suit existing supply/return air plenum boxes
- Supplied with a gas inlet pipe to match existing gas supply location
- Zoned-heating capability
- Not available with Add-On Cooling



Renovating or upgrading?

ReBuff™ is designed to replace Brivis Buffalo and other heater models and brands.



4 star range

Supernova®

4.9 star

Highest star rating in the 4 star category

- Zoned-heating capability
- Available exclusively through [Climate Masters of Seeley International Dealers](#)



Ecostar®

4.7 star

- Zoned-heating capability
- Braemar Add-On Cooling system available for model numbers TQ4X20, TQ4X25 and TQ4X30



Ecostar®

4.5 star

The TQA5X30N is specifically designed to pair with large Add-On Cooling systems where higher airflow rates are required.

- Nicotra forward curved inverter fan assembly provides 1,130l/s through an Add-On coil
- Matches with Braemar 18kW to 24kW Add-On Cooling systems
- Also matches with CW3 MicroCore™ technology for combined cooling and heating solutions



Pair me with large Add-On Cooling systems



Compact SuperSplit

4.4 star

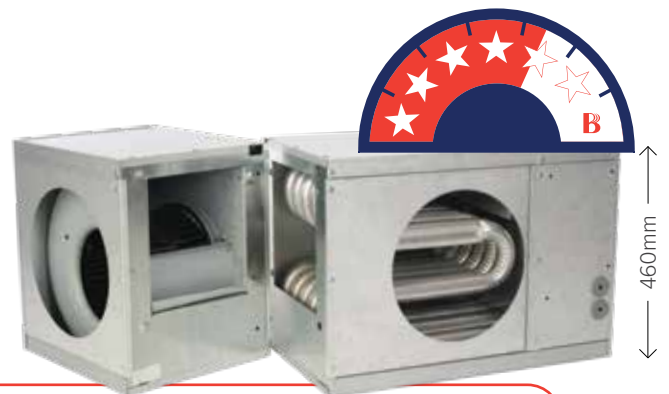
With roof spaces getting lower, a Braemar compact ducted gas heater has been developed that will sit comfortably in new housing roof spaces and splits apart for easy installation into existing homes roof spaces.

- Compact size, ideal for small space installations
- Zoned-heating capability



Energy efficiency & cost savings

The 4 star compact series is compatible with zoning.



3 star range

Supernova®

3.9 star

Highest star rating in the 3 star category

- Value for money
- Easy to operate
- Proven reliability
- Available exclusively through **Climate Masters of Seeley International Dealers**



Ecostar®

3.7 star

- Value for money
- Easy to operate
- Proven reliability



ReBuff™

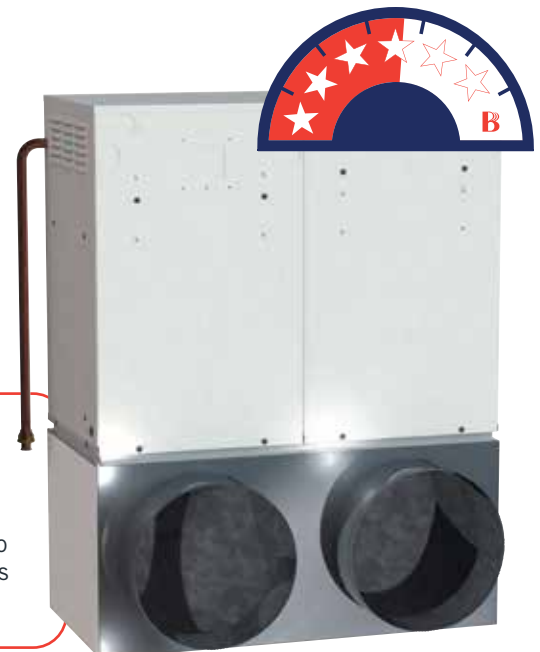
3.7 star

- Pre-fitted with brackets to suit existing supply return air plenum boxes
- Supplied with a gas inlet pipe to match existing gas supply location
- Value for money
- Easy to operate
- Proven reliability
- Not available with Add-On Cooling



Renovating or upgrading?

ReBuff™ is designed to replace Brivis Buffalo and other heater models and brands.



Gas space heaters and wall furnaces

Why Braemar gas space heaters and wall furnaces?

Braemar has a range of gas space heaters and wall furnaces to suit any sized room, in a variety of configurations.



Cost savings

Leading-edge technology ensures maximised energy efficiency and savings in running costs



Efficiency

Super-efficient and economical heating with 4.8 star Braemar Eco-Superstar space heating



Safety

No emissions inside with ultra-safe flued heating



Have it your way

Stylish design with flexible installation options



Environment

Lower CO₂ emissions¹⁷



Ecostar Power Flue Wall Furnaces

Ideal for heating the living area or entertainment spaces of your home, the Braemar Ecostar Power Flue Wall Furnace (PWF) delivers comfort and warmth throughout the cooler months. A great replacement for existing wall furnaces, with an energy efficiency of up to 4.5 stars.

The PWF utilises a powered flue system - safely expelling combustion emissions outside, leaving you in cosy warm comfort inside.

Range

Braemar Ecostar Power Flue PWF30

The PWF30 is a functional and stylish replacement for existing wall furnaces and is able to heat up to 95m².

Braemar Ecostar Power Flue PWF40 (commercial applications only)

The PWF40 will heat an approximate area of 80 - 120m² and is recommended for light commercial or very large domestic applications such as halls and large rumpus rooms. It is not suitable for smaller domestic applications due to the higher heat and air flow rates.

Features

- Overheat safety switches
- Thermostatic temperature control
- Self diagnostic control system
- Cool-to-touch cabinet
- Pre-heat function
- Stealth® Softair® function
- Child lock
- Inbuilt and console models
- PWF30 - natural gas only
- PWF40 - natural gas only
- Multiple fan speeds
- Electronic ignition
- Electronic flame sensing
- Power flue
- Dual gas rate
- Boost setting for rapid heating



Safety

No emissions inside with ultra-safe power flued heating

Have it your way

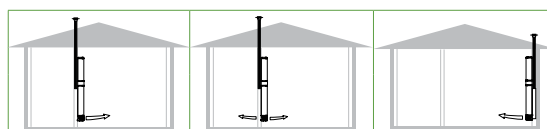
Stylish design with flexible installation options



Option to heat two rooms

Installing your wall furnace on an internal wall? An optional rear register kit means an adjoining room can also be heated.

Flexible installation options



Install location	Internal wall	Internal wall	External wall
Install type	Inbuilt/Console	Inbuilt/Console	Inbuilt/Console
Flue type	Vertical flue	Vertical flue	Vertical flue
Rear register	No	Yes	No

17. Low emissions information taken from: <https://www.yourhome.gov.au/energy/heating-and-cooling> Feb 2021

Ecostar Wall Furnaces



Braemar's wall furnace range is Australia's most attractive and functional. Its slim-line design makes it as discreet or as visible as you wish it to be, and with a stunning 'Ivory Sands' finish, it complements any decor.

Sized to suit you

Braemar wall furnaces are available in three models, to suit your lifestyle needs.

Braemar Eco-Superstar WF25

An ultra-efficient furnace with an impressive 4.8 star rating, the WF25 heats up to 85m² and is a perfect solution for those wanting super-efficient and economical heating.

Replace an existing wall furnace

Braemar wall furnaces are ideal for replacing existing wall furnaces, including the following models:

- Braemar D11/D12/D45/D55
- Vulcan Series 20/22/Quasar
- IXL 10862
- Convair Finesse Range

Please note: Additional kits may be required. Not suitable for direct replacement of fully-recessed models installed into double-brick walls.

Model being replaced	Flue extension kit 080802 (PWF30/40)	In-fill panel kit 085135 (WF25)	In-fill panel kit 085135 (PWF30/40)
Braemar D11/12	Kit not required	Kit not required	Kit not required
Braemar D45/55	Kit not required	Yes*	
Vulcan Series 20/22	Kit not required	Kit not required	
Vulcan Quasar	Yes	Yes*	
IXL 10862	Yes	Kit not required	
Convair Finesse	Yes	Kit not required	

Please note: when replacing existing Wall Furnaces with a WF25, a new coaxial flue system is required. Refer to flue kits required on the Flexible Installation Options chart.

* Required for inbuilt installations only.

*Refer to page 30 for technical specifications.

Console kit - standard: up to 3 m ceiling height
 Console kit - long: up to 3.6 m ceiling height

Features and benefits

Eco-Superstar WF25

- Overheat safety switches
- Thermostatic temperature control
- Self diagnostic control system
- Cool-to-touch cabinet
- Pre-heat function
- Stealth® Softair® function
- Economy mode
- Child lock
- Inbuilt and console models
- Natural and propane gas
- High/low fan speeds
- Electronic ignition
- Electronic flame sensing
- Balanced flue
- High/low gas rate
- **Impressive 4.8 star rating**

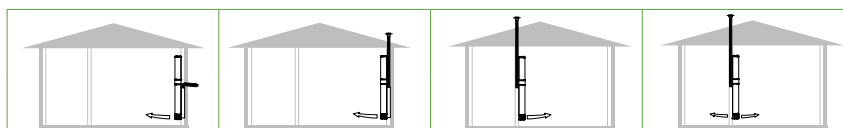


Option to heat two rooms

Installing your wall furnace on an internal wall? An optional rear register kit means an adjoining room can also be heated, which effectively gives you two heaters for little more than the price of one.



Flexible installation options



Install location	External wall	External wall	Internal wall	Internal wall
Install type	Inbuilt/Console	Inbuilt/Console	Inbuilt/Console	Inbuilt/Console
Flue type	Horizontal flue	Vertical flue	Vertical flue	Vertical flue
Rear register	NA	NA	No	Yes

Eco-Superstar space heaters

Braemar Eco-Superstar's balanced flue gas space heaters boast an amazing 4.8 star gas energy rating – saving you money on running costs.

Ultra efficient balanced flue heating

Balanced flue space heating is one of the most economical forms of heating and Braemar Eco-Superstar space heaters are among the highest star rated products.

The energy efficiency of gas heaters is measured independently, and awarded star ratings. The higher the star rating, the more energy-efficient the heater is. The more energy-efficient, the more you save on running costs.

This is why Braemar Eco-Superstar space heaters have in-built technology to ensure they maximise their energy efficiency to an incredible 4.8 stars.

Sized to suit you

Braemar Eco-Superstar space heaters are available in two sizes to meet your heating needs:

- The SH18 unit heats up to 62 m²
- The SH25 unit heats up to 85 m²



SH18

SH25

Features and benefits

Standard:

- Overheat safety switches
- Thermostatic temperature control
- Self diagnostic control system
- Cool-to-touch cabinet
- High/low gas rates
- Pre-heat function
- Stealth® Softair® function
- Economy mode
- Child lock
- Inbuilt and console models
- Balanced flue
- Natural and propane gas
- High/low fan speeds
- Electronic ignition
- Electronic flame sensing

Optional:

- Rear register kit



Flexible installation options for SH18 and SH25

Install location	External wall	External wall	External wall	Internal wall	Internal wall
Install type	Inbuilt	Inbuilt	Console	Inbuilt	Inbuilt
Flue type	Horizontal flue	Vertical flue	Horizontal flue	Vertical flue	Vertical flue
Rear register	NA	NA	NA	No	Yes



Technical Specifications

Ducted Gas Heating

7 Star Equivalent¹

Model	Series	Stars	Gas rate (MJ/h)	Airflow @ 100 Pa (l/s)	Output (kW)	Length (mm)	Width (mm)	Height (mm)	Duct dia (mm)	Gas type
TQS730 ¹	Ecostar	7.0	100	700	26.6	1165	510	660	350	NG

6 Star Equivalent¹

Model	Series	Stars	Gas rate (MJ/h)	Airflow @ 100 Pa (l/s)	Output (kW)	Length (mm)	Width (mm)	Height (mm)	Duct dia (mm)	Gas type
Super-Six TQS623	Supernova	6.8	88	640	23.5	1150	385	660	300	NG
Super-Six TQS6X23 ²	Supernova	6.8	88	755	23.5	1150	385	660	350	NG
Super-Six TQS632	Supernova	6.8	122	935	31.2	1165	510	660	350	NG
Super-Six TQS6X32 ²	Supernova	6.8	122	1070	31.2	1165	510	660	400	NG
TQM618	Ecostar	6.3	70	500	17.9	1150	385	660	300	NG
TQM623	Ecostar	6.3	88	640	22.5	1150	385	660	300	NG
TQM6X23 ²	Ecostar	6.3	88	755	22.5	1150	385	660	350	NG
TQM6X23U ²	Ecostar	6.3	88	755	22.5	1150	385	660	350	Propane
TQM632	Ecostar	6.3	122	935	31.2	1165	510	660	350	NG
TQM6X32 ²	Ecostar	6.3	122	1070	31.2	1165	510	660	400	NG
TQM6X32U ²	Ecostar	6.3	122	1070	31.2	1165	510	660	400	Propane

5 Star

Model	Series	Stars	Gas rate (MJ/h)	Airflow @ 100 Pa (l/s)	Output (kW)	Length (mm)	Width (mm)	Height (mm)	Duct dia (mm)	Gas type
Super-Five TQS523	Supernova	5.9	88	640	22.5	1150	385	660	300	NG
Super-Five TQS532	Supernova	5.9	122	935	31.2	1165	510	660	350	NG
TQM516	Ecostar	5.2	70	475	15.9	770	385	660	300	NG
TQM520	Ecostar	5.2	88	630	20.0	770	385	660	300	NG
TQM5X20 ²	Ecostar	5.2	88	695	20.0	770	385	660	350	NG
TQM5X20U ²	Ecostar	5.2	88	695	20.0	770	385	660	350	Propane
TQM530	Ecostar	5.2	122	960	27.8	880	510	660	350	NG
TQM5X30 ²	Ecostar	5.2	122	1050	27.8	880	510	660	400	NG
TQM5X30U ²	Ecostar	5.2	122	1050	27.8	880	510	660	400	Propane
SSQ5X20 ²	Ecostar	5.2	88	695	20.0	770	385	660	350	NG
SSQ5X30 ²	Ecostar	5.2	122	1050	27.8	880	510	660	400	NG
TQMD520 ³	ReBuff	5.2	88	490	20.0	770	385	635	n/a	NG
TQMD530 ⁴	ReBuff	5.2	122	880	27.8	880	510	650	n/a	NG

Non condensing

Side service

1. Star rating equivalent. Based on Australian Gas Association's results calculated in accordance with the testing methodology in AS/NZS5263.1.6:2020
2. Extra air models are designed to have Braemar add-on cooling system added.
3. Mounting frame dimensions to fit existing supply/return air plenum box: 770mm(W) x 395mm(D). Models suitable for external installation only.
4. Mounting frame dimensions to fit existing supply/return air plenum box: 880mm(W) x 565mm(D).
5. Pre-set for 860L/s heating airflow and 1250 L/s cooling airflow.

4 Star

Model	Series	Stars	Gas rate (MJ/h)	Airflow @ 100 Pa (l/s)	Output (kW)	Length (mm)	Width (mm)	Height (mm)	Duct dia (mm)	Gas type
Exclusive to CMSI Dealers										
Super-Four TQS420	Supernova	4.9	88	630	20.0	770	385	660	300	NG
Super-Four TQS430	Supernova	4.9	122	960	27.8	880	510	660	350	NG
TQ415	Ecostar	4.7	60	475	14.0	770	385	660	300	NG
TQ420	Ecostar	4.7	80	630	18.0	770	385	660	300	NG
TQ4X20 ²	Ecostar	4.7	80	695	18.0	770	385	660	350	NG
TQ425	Ecostar	4.7	100	755	23.0	770	385	660	350	NG
TQ4X25 ²	Ecostar	4.7	100	810	23.0	770	385	660	350	NG
TQ430	Ecostar	4.7	122	960	28.0	880	510	660	350	NG
TQ4X30 ²	Ecostar	4.7	122	1050	28.0	880	510	660	400	NG
TQ435	Ecostar	4.7	140	1050	32.0	880	510	660	400	NG
TQA5X30 ^{2,5}	Ecostar	4.5	122	860/1250	28.0	960	660	660	400	NG
CQS415	Compact	4.0	60	430	14.0	1065	375	460	300	NG
CQS420	Compact	4.4	90	600	20.5	1065	375	460	300	NG
CQS430	Compact	4.4	120	950	27.5	1110	470	480	350	NG

3 Star

Model	Series	Stars	Gas rate (MJ/h)	Airflow @ 100 Pa (l/s)	Output (kW)	Length (mm)	Width (mm)	Height (mm)	Duct dia (mm)	Gas type
Exclusive to CMSI Dealers										
Super-Three TQS320	Supernova	3.9	80	630	18.0	770	385	660	300	NG
TQ315	Ecostar	3.7	60	475	14.0	770	385	660	300	NG
TQ320	Ecostar	3.7	80	630	18.0	770	385	660	300	NG
TQ325	Ecostar	3.7	100	755	23.0	770	385	660	350	NG
TQ330	Ecostar	3.7	122	960	28.0	880	510	660	350	NG
TQD315 ³	ReBuff	3.7	60	440	14.0	770	385	635	n/a	NG
TQD320 ³	ReBuff	3.7	80	490	18.0	770	385	635	n/a	NG
TQD330 ⁴	ReBuff	3.7	122	880	28.0	880	510	650	n/a	NG

Space Heater

Model	Dimensions (mm)				Star rating	Gas Input MJ/hr		Heat output kW	Area that can be heated (m ²)*		
	H	W	D (inbuilt)	D (console)		Low	High		Cold	Cool	Mild
Eco-Superstar SH18	900	495	167	262	4.8	12	18	4.3	40	54	62
Eco-Superstar SH25	1050	495	167	262	4.8	17	25	6.0	57	75	85

*Area that can be heated is an indication only and is based on brick veneer construction, insulated walls and ceilings, 2.4m ceiling height and suitable window coverings. Precise heating capacity calculation should be undertaken to determine the correct unit required for your specific application.

Wall Furnace

Model	Dimensions (mm)				Star rating	Gas input (MJ/hr)		Heat output kW	Area that can be heated (m ²)*		
	H	W	D (inbuilt)	D (console)		Low	High		Cold	Cool	Mild
Eco-Superstar WF25	1800	495	167	262	4.8	17	25	6.0	57	75	85
Ecostar Power Flue PWF30	2050	498	167	260	4.5	20	28	6.4	65	85	95
Ecostar Power Flue PWF40	2050	498	167	260	4.2	25	38	8.6	80	100	120

*Area that can be heated is an indication only and is based on brick veneer construction, insulated walls and ceilings, 2.4m ceiling height and suitable window coverings. Precise heating capacity calculation should be undertaken to determine the correct unit required for your specific application.

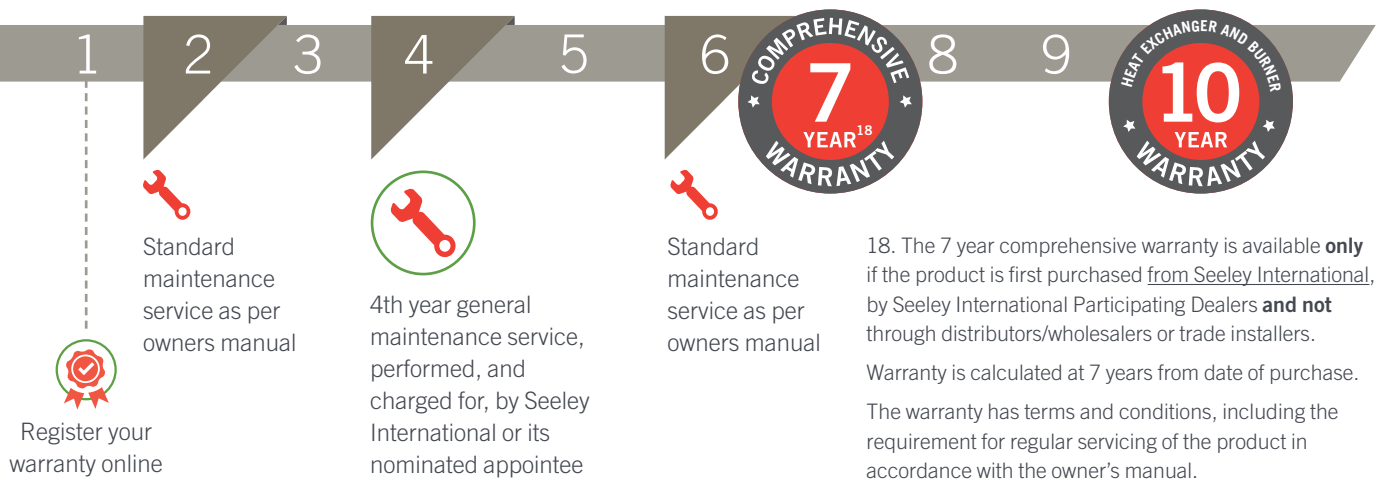


Warranty terms and conditions

Ducted gas heating

Braemar ducted gas heating units are Australian made, using premium grade materials and supported by a comprehensive factory-backed warranty. While our engineering and quality control procedures mean we don't think you'll ever need to use it, our warranty is there for your protection and peace of mind.

Service requirements to maximise your warranty:



Register your warranty for your Braemar gas heating products and go into the draw to win \$500 worth of prizes¹⁹

Prizes include 2 free services (up to the value of \$400) and a \$100 eftpos gift card

All you need is your home owners' manual and your serial number:

- Go to seeleyinternational.com and click on the 'Support' tab
- Go to 'Register a product for warranty'
- Complete all the required details online



Space heaters and wall furnaces

Braemar space heaters and wall furnaces are backed by a 2 year warranty, and 10 year heat exchanger warranty.



IMPORTANT

Remember to always use qualified, licensed installers who have been trained to install Braemar products. While Seeley International stands by its product quality, a poorly installed product may not operate properly and can even be dangerous. So be sure to buy your product from a reputable dealer (visit seeleyinternational.com or call 1300 136 515 to find a dealer) and make sure your installer is fully qualified and trained.

18. The 7 year comprehensive warranty is available exclusively (i.e. only) if the product is purchased from Seeley International participating dealers. If it is not, then the warranty period, when the product is used for personal, residential household purposes, is 5 years. In commercial applications (when the product is used for keeping people warm), the warranty period is 5 years, and it is 1 year for non-domestic heating applications. The warranty has terms and conditions, including the requirement for regular servicing of the product in accordance with the owner's manual. In the fourth year the service must be performed by Seeley International or its appointed nominee.

19. Terms and conditions apply. See seeleyinternational.com for more information, including the dates of the promotion.



Harness the *power* of nature



BREEZAIR

Ducted Evaporative Air Conditioning

BRAEMAR

Ducted Evaporative Air Conditioning | Ducted Gas Heating
Reverse Cycle Air Conditioning | Gas Wall Furnaces and Space Heaters

THE CLIMATE WIZARD

Micro-Core[®] Technology

SUPERCOOL

Ducted Evaporative Air Conditioning

COOLAIR

Ducted Evaporative Air Conditioning

COOLERADO

Indirect Evaporative Air Conditioning

AIRA

Direct and Indirect Evaporative Air Conditioning | Ducted Gas Heating
Commercial Gas Space Heating | Energy Recovery Systems

INTEGRATED COMFORT INCORPORATED (ICI)

Dual Cool[®] Patented Dual Evaporative pre-cooling products

seeleyinternational.com/braemar

1300 360 815

2022



With the generous support of our Australasian dealers we are proud to be the National Variety Bash partner supporting kids in need across Australia.

Seeley International Pty Ltd

ABN 23 054 687 035

112 O'Sullivan Beach Road, Lonsdale, SA 5160

Phone: (08) 8328 3850 Fax: (08) 8328 3950

Email: enquiries@seeleyinternational.com
seeleyinternational.com

Information in this brochure was correct at the time of preparation. E & OE



Cat No CMSI014 REV B (0322)